

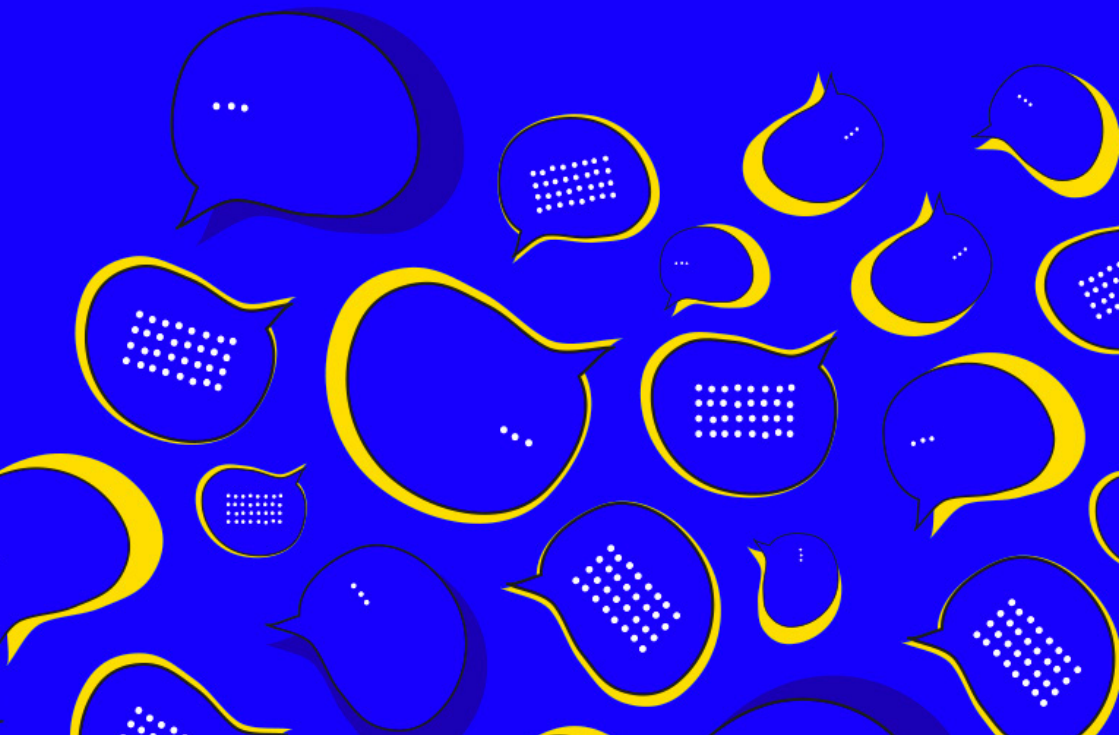


(L)earning (E)urope through
(M)obility and (O)pportunities (N)etwork.



LEMON MANIFESTO.

LEMON Manifesto for youth mobility and European education: empowering young people to build a sustainable future.



WHO IS LEMON?

We, the **LEMON** federation, a network of organizations dedicated to fostering youth mobility and European education, believe in a future where all young people are equipped with the **knowledge, skills, and opportunities** to become active and engaged European citizens who contribute to a sustainable world.

WE ENVISION A EUROPE WHERE YOUNG PEOPLE...

Embrace mobility as a tool for personal and professional growth: Develop intercultural competence, adaptability, and a global perspective through diverse mobility experiences, while minimizing their environmental impact.

Become informed and engaged citizens: Understand the complexities of the European Union, its history, values, and challenges, and actively participate in shaping its future, with a strong commitment to sustainability.



Champion diversity and inclusion: Value and respect cultural differences, promote social cohesion, well-being and contribute to building a more inclusive and equitable society, recognizing the interconnectedness of social and environmental justice.

Lead the way towards a sustainable future: Develop critical thinking skills, embrace environmental responsibility, and actively contribute to building a more sustainable Europe through conscious consumption, ecological awareness, and responsible travel practices.



OUR COMMITMENTS

Provide accessible and high-quality mobility


opportunities: offer a diverse range of programs that cater to different needs and interests, ensuring inclusivity and accessibility for all young people, while prioritizing sustainable travel options and minimizing environmental impact.

Integrate European education and sustainability into

all our programs: foster critical thinking, intercultural dialogue, and active citizenship through innovative and engaging learning experiences that promote environmental awareness and responsible behavior.

Empower young people to become agents

of change: support youth-led initiatives, promote active participation in democratic processes, and encourage young people to become drivers of positive change in their communities, with a focus on sustainable development and environmental protection.



Advocate for policies that support youth mobility, European education, and sustainability: work with policymakers and stakeholders to create an enabling environment for youth mobility and ensure that education systems adequately prepare young people for the challenges and opportunities of European citizenship in a sustainable world.

Enhance the skills and knowledge of youth workers through training and support, leading to improved quality in youth work and European Youth work.



Join us in building a Europe where **young people** are empowered to learn, grow, connect, and contribute to a better, more sustainable future!

Together, let's make **youth mobility and European education** a reality for all, while protecting our planet!



OUR ACTIONS

DEVELOP ACCESSIBLE AND INCLUSIVE MOBILITY PROGRAMS

Diversify the offer: offer a variety of formats (internships, volunteering, exchanges, training courses) to meet the needs and aspirations of all young people, including those with fewer opportunities.

Facilitate access: minimize financial and administrative barriers (scholarships, mobility grants, personalized support) to allow all young people to participate, regardless of their social background.

Integrate the environmental dimension: favor sustainable modes of transport (train, carpooling), raise awareness among young people about ecoresponsibility, and promote environmentally friendly travel practices.



INTEGRATE EDUCATION ABOUT EUROPE AND SUSTAINABILITY INTO ALL PROGRAMS:

Develop learning modules: create workshops, training courses, role-playing games, visits to European institutions to raise awareness among young people about the issues of the EU and European citizenship.


Encourage civic engagement: organize debates, simulations of the European Parliament, meetings with European actors to stimulate the active participation of young people.

Raise awareness about sustainability: integrate environmental themes into projects (circular economy, renewable energies, biodiversity), promote sustainable lifestyles and encourage young people to engage in eco-citizen actions.

ENHANCE THE SKILLS AND KNOWLEDGE OF YOUTH WORKERS:

Drive quality in youth work through targeted training and support.

Connect youth workers and facilitate collaboration through annual conferences and networking events.



EMPOWER YOUNG PEOPLE:

Support youth-led initiatives: support projects led by young people, encourage self-organization and engagement in local or European actions.

Promote participation: encourage young people to express themselves, take initiatives and participate in decision-making processes within the network and in society.

Develop critical thinking: give young people the tools to analyze information, deconstruct stereotypes and form their own opinions about Europe and contemporary issues.

ADVOCATE FOR POLICIES IN FAVOR OF MOBILITY, EDUCATION ABOUT EUROPE AND SUSTAINABILITY:

Raise awareness among decision-makers: communicate the importance of mobility and education about Europe to institutions and political actors.

Participate in consultations: contribute to debates and consultations on European policies on youth, education and sustainable development.

Create alliances: network with other youth organizations, European institutions and civil society actors to strengthen the impact of advocacy actions.

By implementing these concrete actions, members of **LEMON** can contribute to making their manifesto a reality and *empowering young* people to build a more *united, sustainable and inclusive Europe*.





Phone: +33(0)5 59 84 92 00

Website: www.lemon-network.eu

Address: 164 Avenue Philippon - 64000 Pau - France